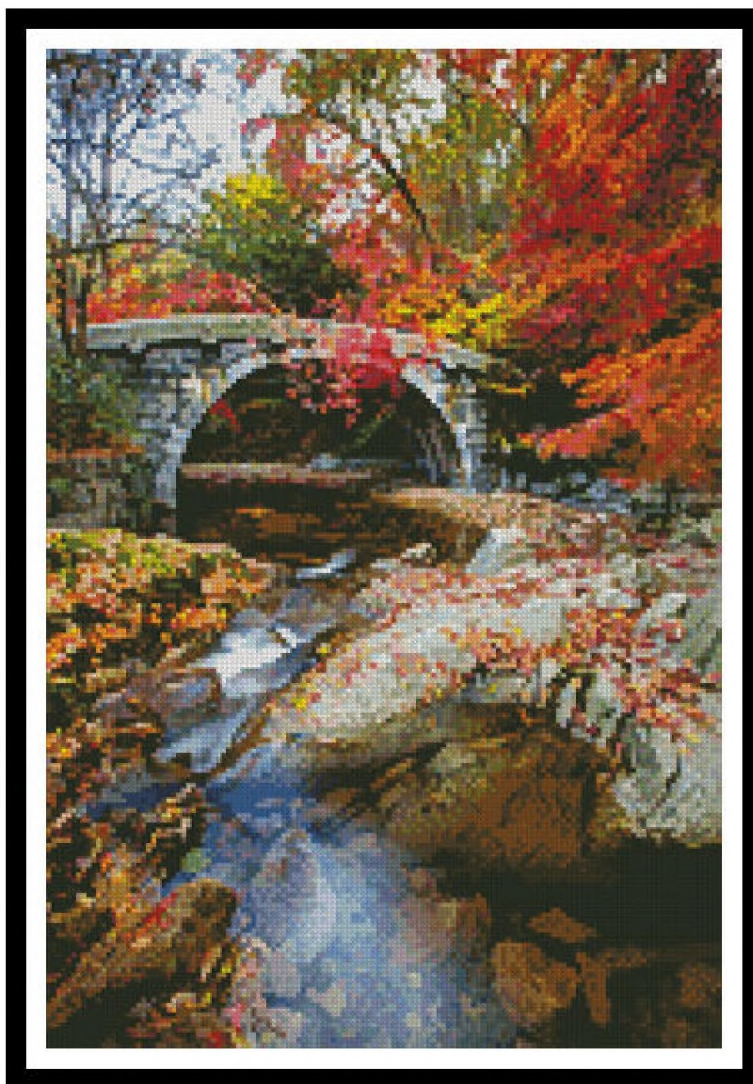


Artecy

CROSS STITCH

Mini Small Stone Bridge



* Original image© Martin Bennie - Unsplash
Cross Stitch Design by Tereena Clarke.

Completed Size = 135w x 200h Stitches

14 Count, 10w x 14.5h inches (25cm x 37cm)

16 Count, 8.5w x 12.5h inches (22cm x 32cm)

18 Count, 7.5w x 11.5h inches (19cm x 29cm)

Uses 90 DMC cotton colours. Only full cross stitches are used in this pattern.

Pattern Instructions

* This pattern can be worked on any fabric type, colour or count you prefer. To work out the size of the finished article, take the number of stitches wide and high and divide it by the count of your fabric (e.g. 14,16,18 count aida etc) to get the size in inches. Times it by 2.54 to get centimetres. We have the sizes in inches shown on the previous page. Also leave at least a few inches of fabric around each side of the design to assist in framing. The higher the fabric count the smaller the completed project will be.

* To put the pattern together look in the top and bottom corners. The page numbers in brackets show which page number it joins up to. Page 1 always starts at the top left hand side of the pattern. Our pages also have a shaded grey section. This indicates a 3 row overlap from adjoining pages to assist with reading the pattern. PLEASE DO NOT RESTITCH THIS AREA.

* You should begin at the centre of the pattern. To find the centre of the pattern it is just a matter of laying the pattern out and locating the arrows at the top and left hand side of the patterns, they are determined by dividing the stitch numbers wide and high in half. Where the two points meet in the middle, that is the centre.

* If you need more assistance to find the middle of your pattern or the page layout, please see the notes section on the colour symbol chart. The easiest way to stitch this pattern, as it has multiple pages, is to stitch one page at a time.

* We suggest using two strands of floss for each stitch and one strand for backstitching if the pattern calls for it.

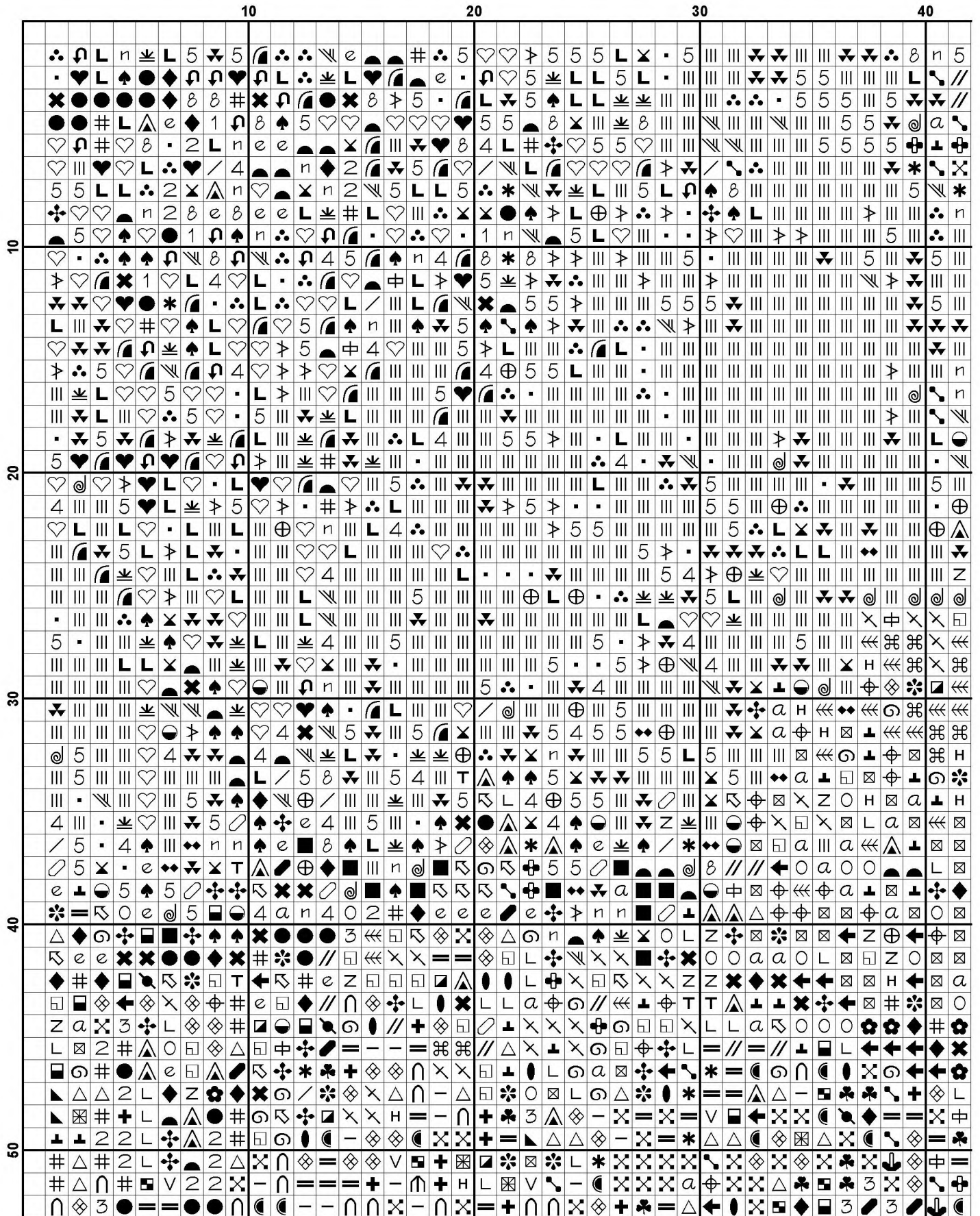
We hope you enjoy stitching our pattern.

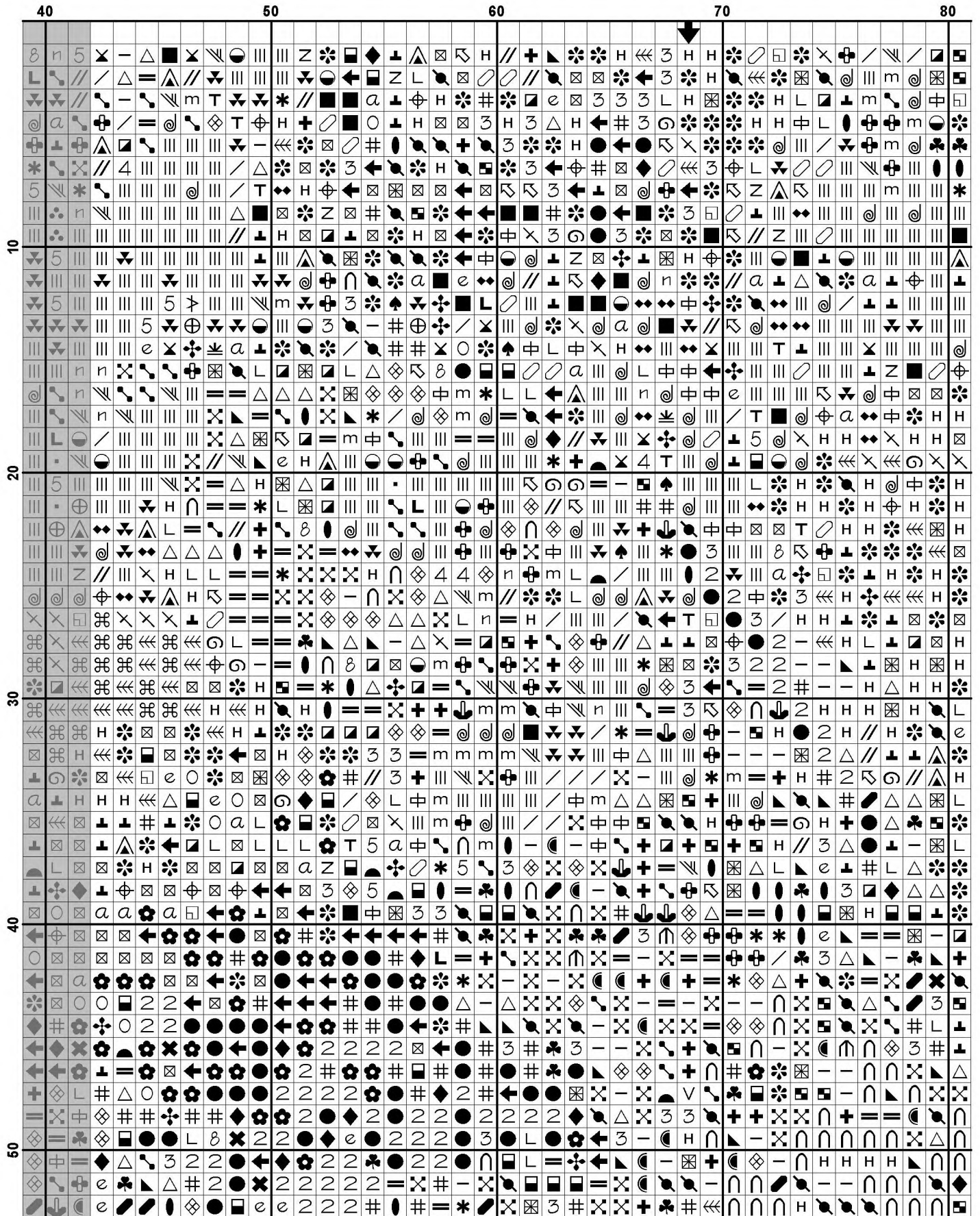
Thanks and Best Wishes
Tereena Clarke

Artecy Cross Stitch
Po Box 3474
Tuggerah, NSW 2259
Australia

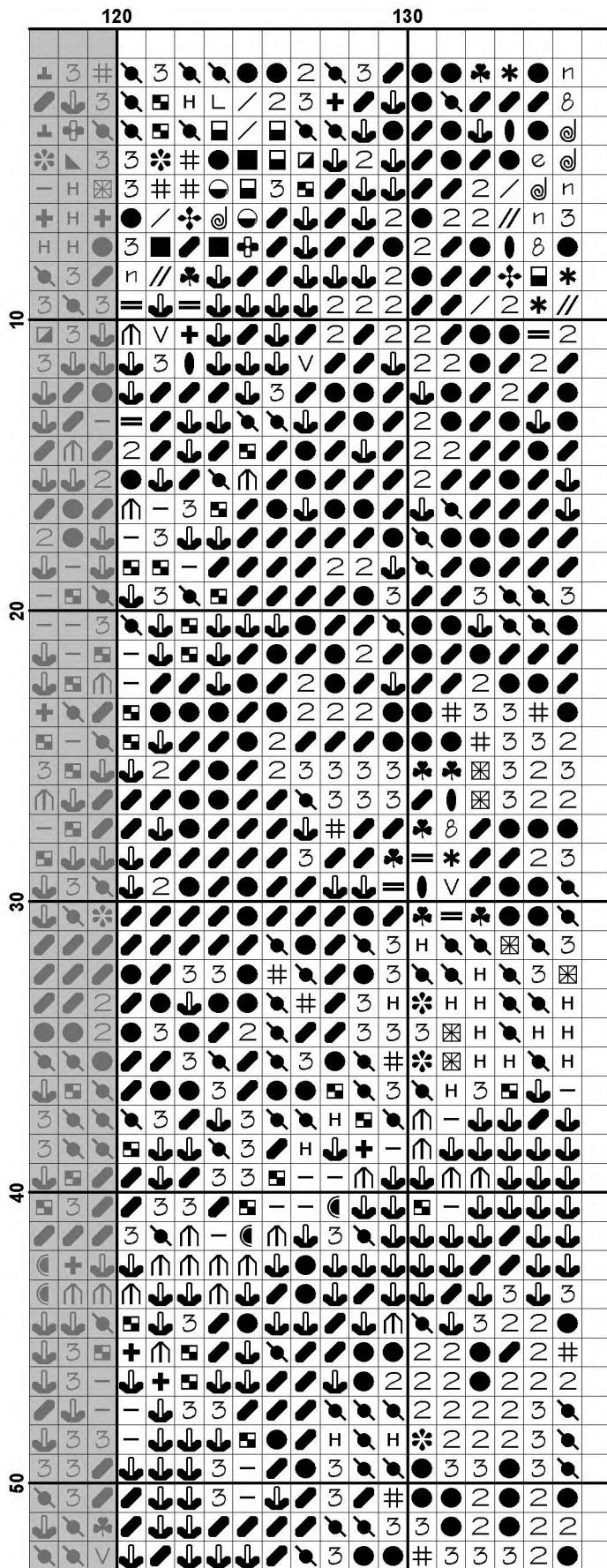
Websites: www.artecy.com and www.artecyshop.com
Email: artecy@artecy.com or stitch@artecyshop.com

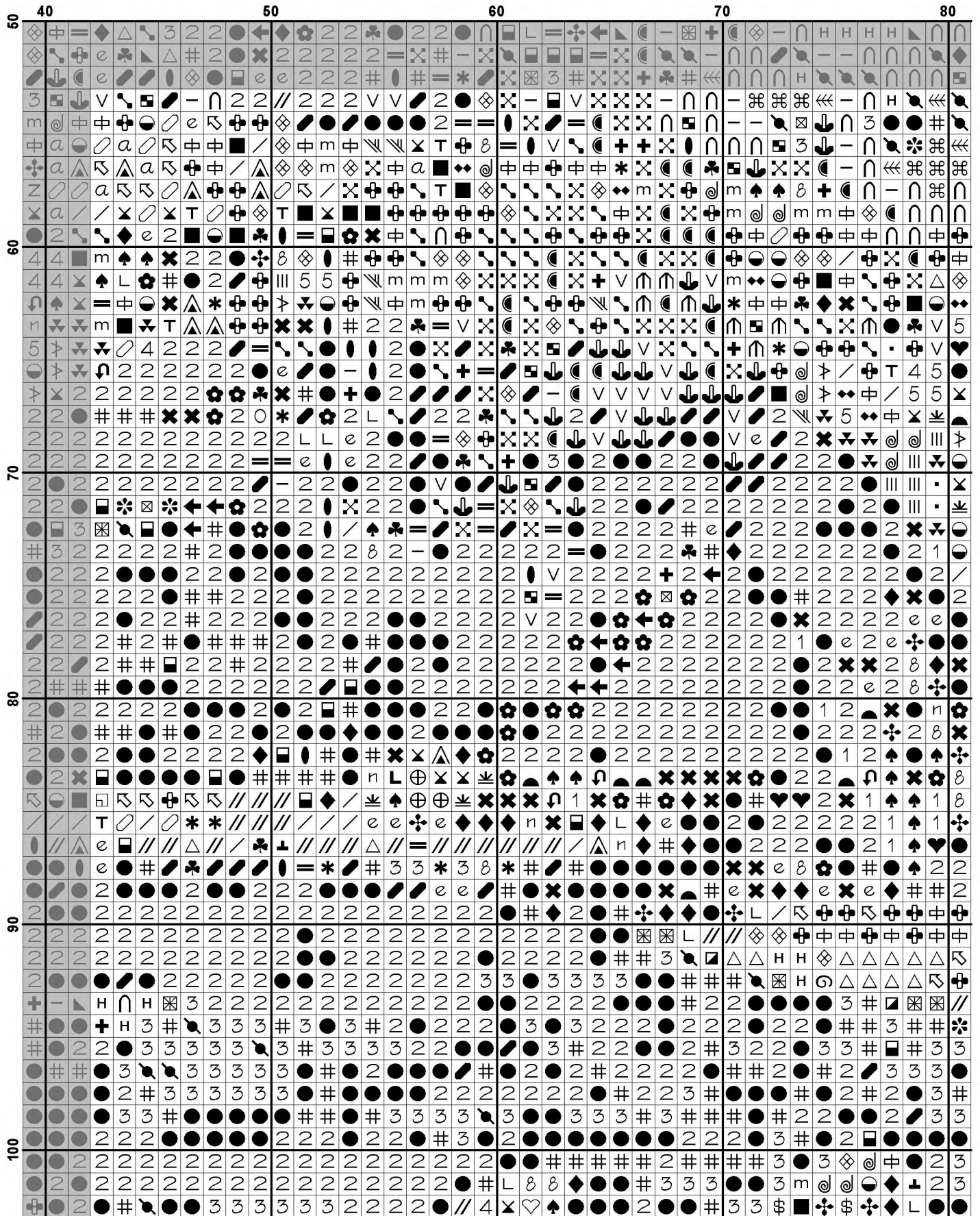
*Patterns are strictly for personal use only. It is against our copyright to make kits for sale from our designs or to sell, copy or redistribute this pattern in any form. You may not upload our patterns to any internet forums or groups or any other website. You may make 1 copy of this pattern for a working copy for your own personal use if needed.

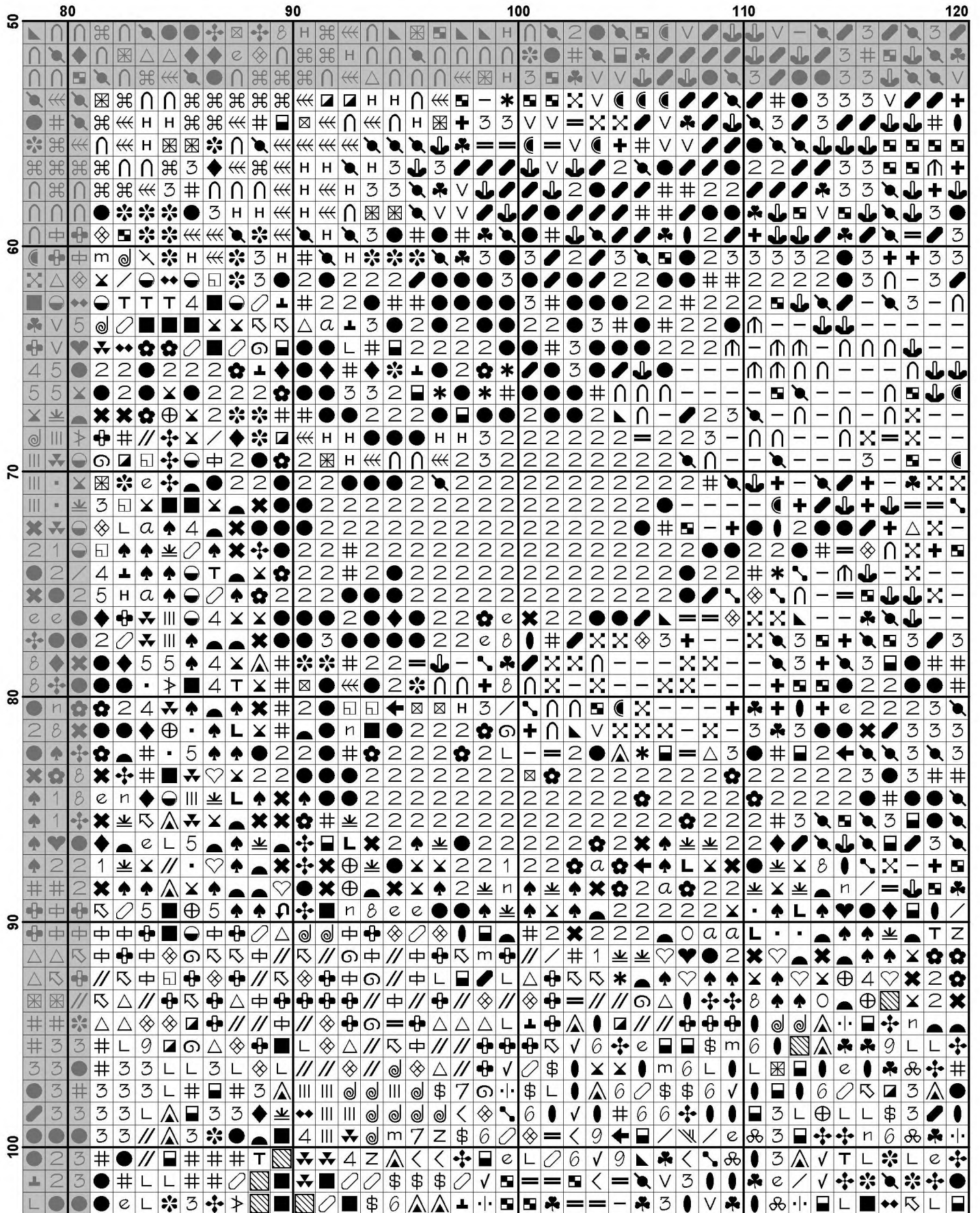


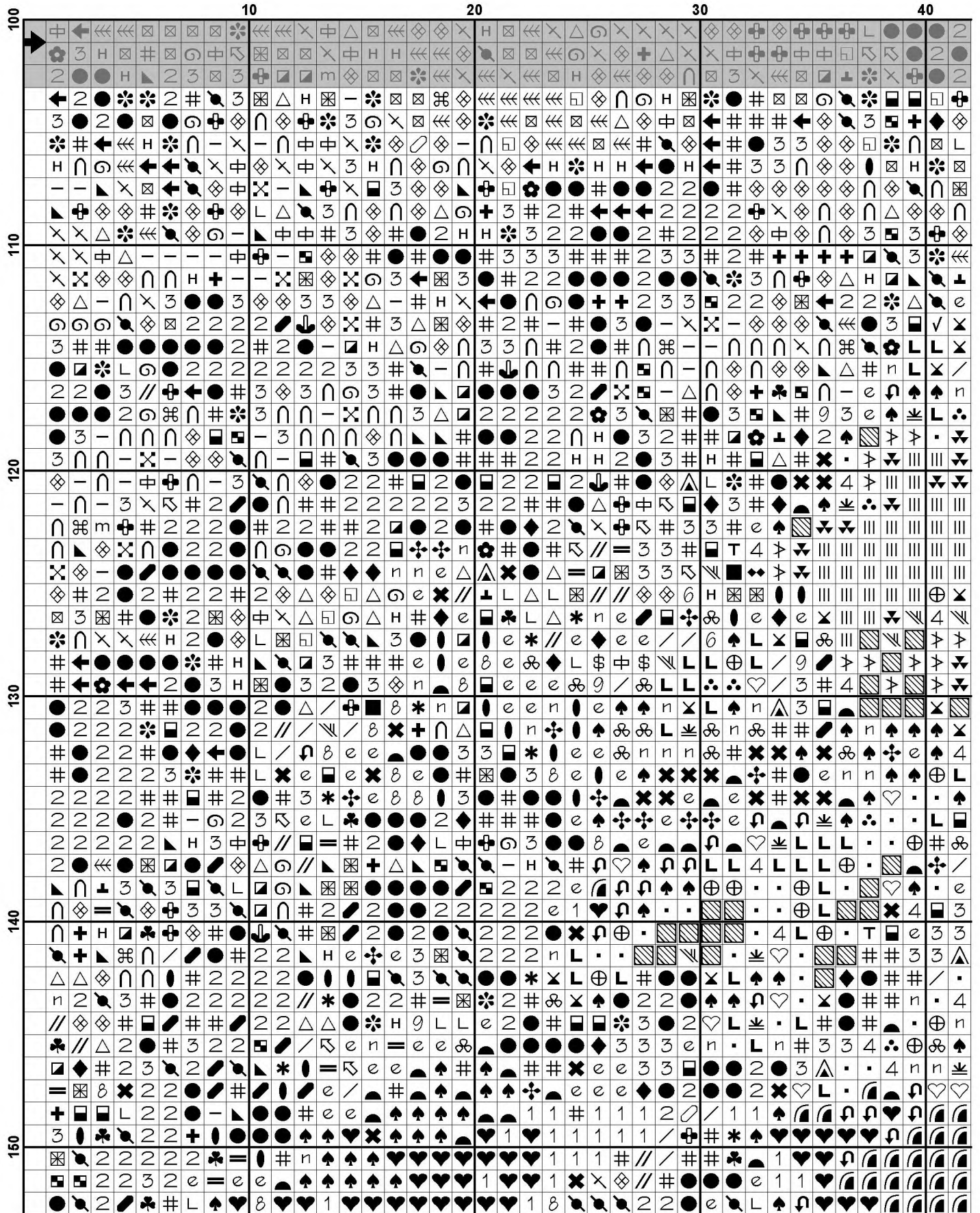


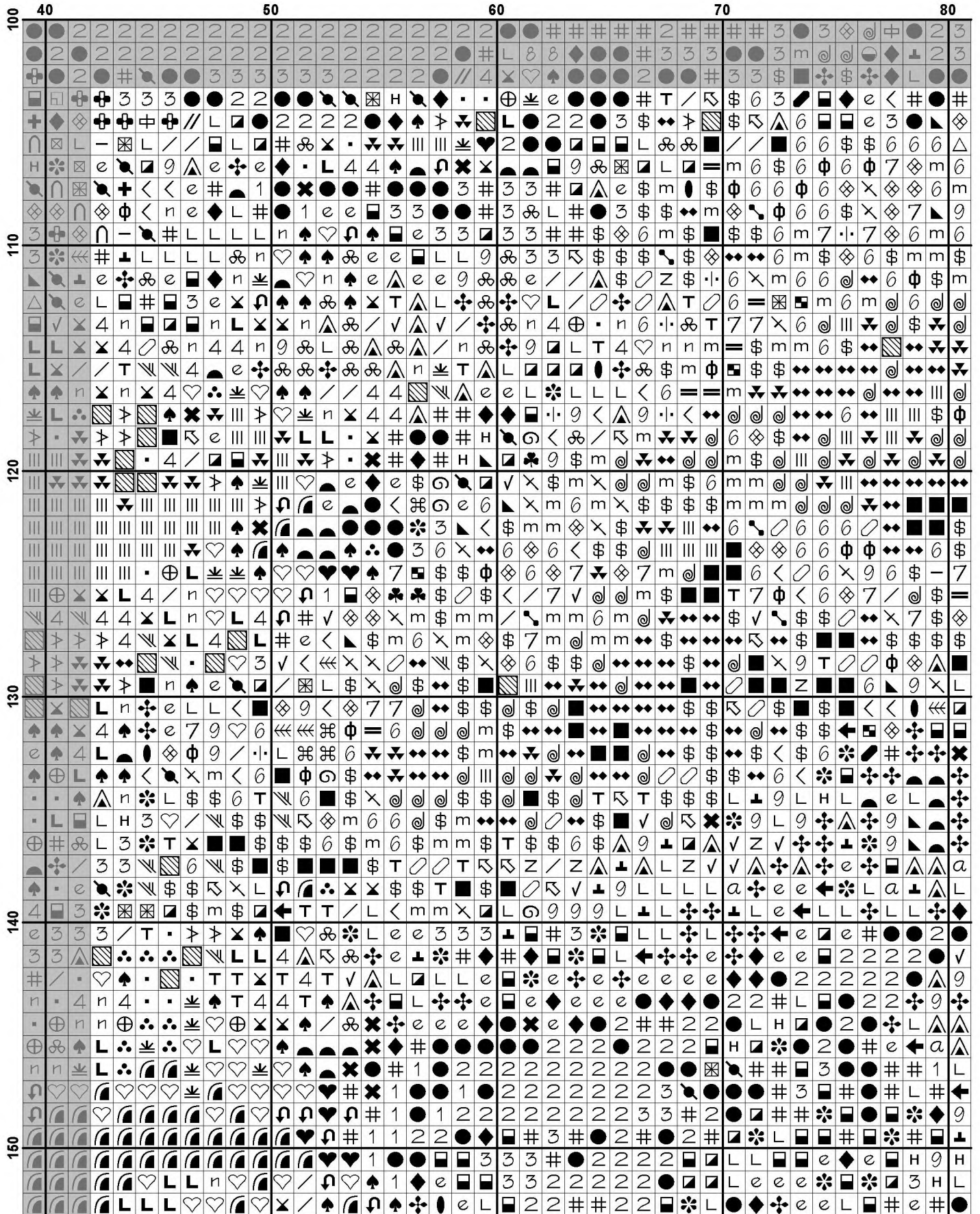
	80	90	100	110	120
10
20
30
40
50

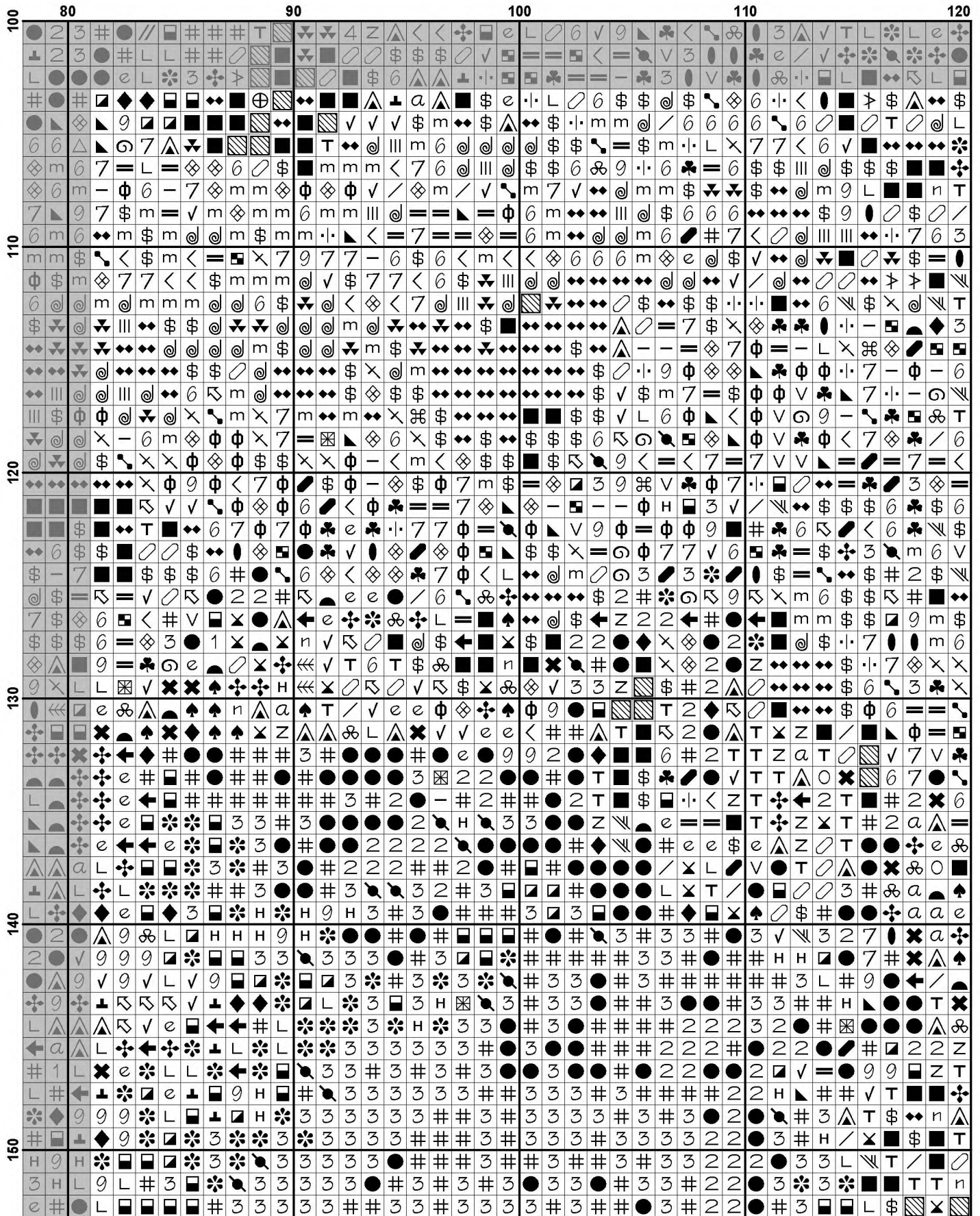


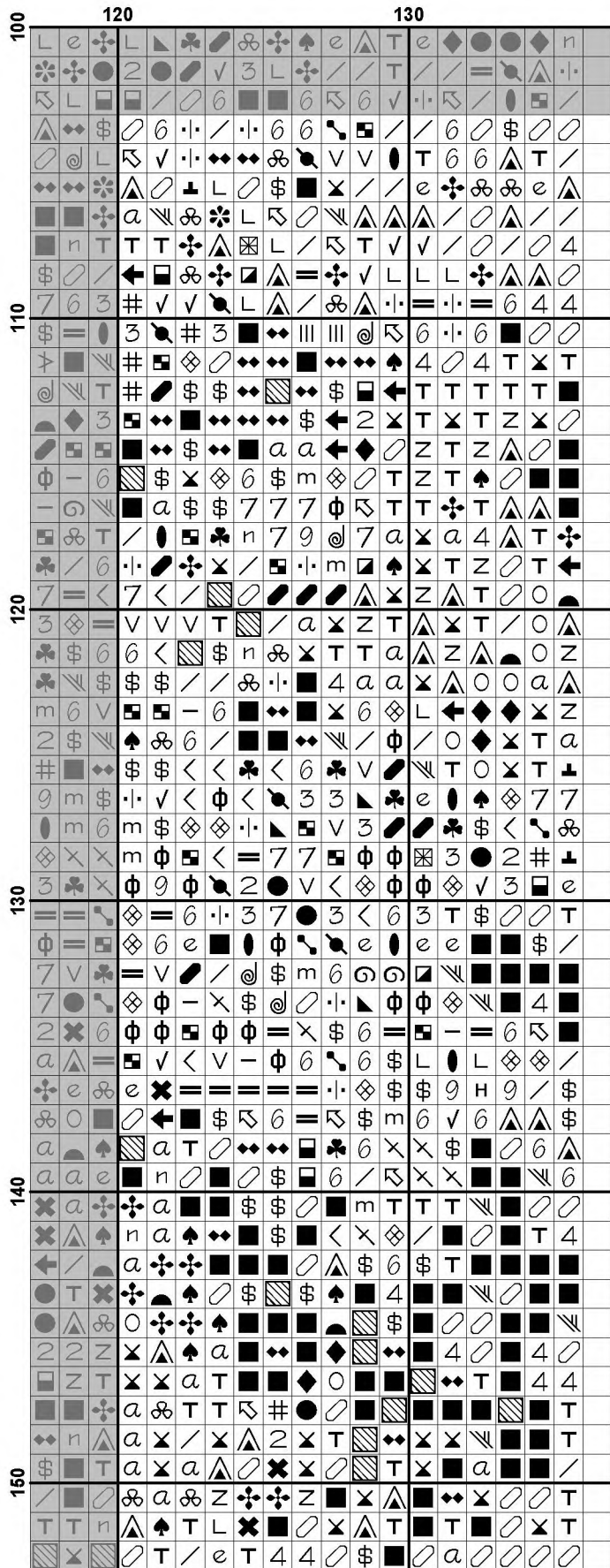


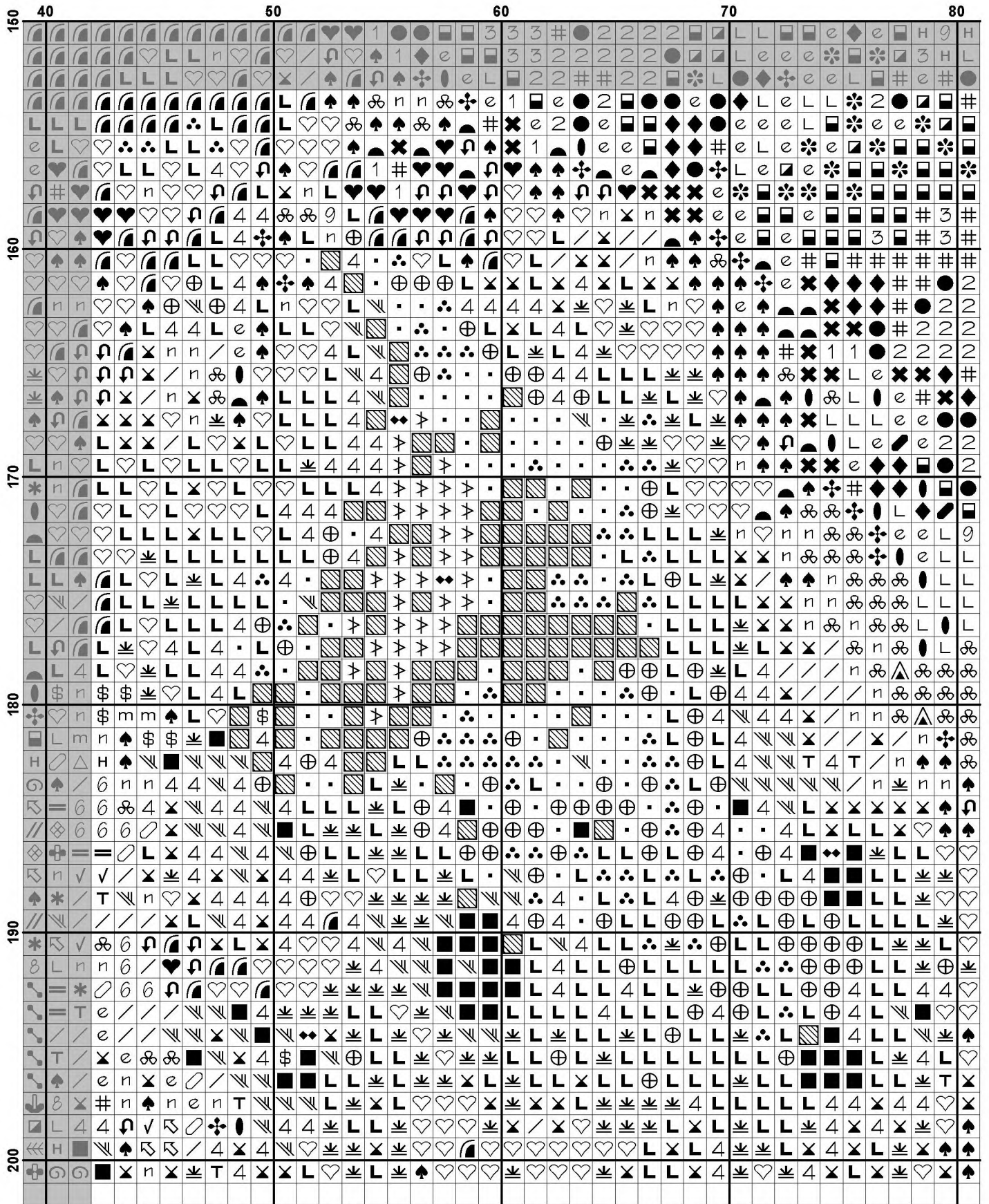












Pattern Name: Mini Small Stone Bridge
Designed By: Photo by Martin Bennie - Unsplash
Company: Artecy Cross Stitch
Copyright: Copyright Artecy Cross Stitch. All rights Reserved.
Fabric: Aida 14, White
 135w X 200h Stitches
Size(s): 14 Count, 9-5/8w X 14-1/4h in
 16 Count, 8-3/8w X 12-1/2h in
 18 Count, 7-1/2w X 11h in

Floss Used for Full Stitches:

Symbol	Strands	Type	Number	Color
	2	DMC	150	Dusty Rose-UL VY DK
	2	DMC	152	Shell Pink-MD LT
	2	DMC	160	Gray Blue-MD
	2	DMC	161	Gray Blue
	2	DMC	166	Moss Green-MD LT
	2	DMC	169	Pewter-LT
	2	DMC	300	Mahogany-VY DK
	2	DMC	307	Lemon
	2	DMC	310	Black
	2	DMC	317	Pewter Gray
	2	DMC	318	Steel Gray-LT
	2	DMC	336	Navy Blue
	2	DMC	370	Mustard-MD
	2	DMC	372	Mustard-LT
	2	DMC	400	Mahogany-DK
	2	DMC	402	Mahogany-VY LT
	2	DMC	413	Pewter Gray-DK
	2	DMC	434	Brown-LT
	2	DMC	435	Brown-VY LT
	2	DMC	436	Tan
	2	DMC	471	Avocado Green-VY LT
	2	DMC	520	Fern Green-DK
	2	DMC	524	Fern Green-VY LT
	2	DMC	580	Moss Green-DK
	2	DMC	606	Bright Orange-Red
	2	DMC	612	Drab Brown-LT
	2	DMC	640	Beige Gray-VY DK
	2	DMC	647	Beaver Gray-MD
	2	DMC	648	Beaver Gray-LT
	2	DMC	720	Orange Spice-DK
	2	DMC	722	Orange Spice-LT
	2	DMC	730	Olive Green-VY DK
	2	DMC	734	Olive Green-LT
	2	DMC	741	Tangerine-MD
	2	DMC	758	Terra Cotta-VY LT
	2	DMC	775	Baby Blue-VY LT
	2	DMC	779	Cocoa-DK
	2	DMC	780	Topaz-UL VY DK
	2	DMC	782	Topaz-DK
	2	DMC	794	Cornflower Blue-LT
	2	DMC	799	Delft Blue-MD
	2	DMC	800	Delft Blue-Pale
	2	DMC	801	Coffee Brown-DK
	2	DMC	814	Garnet-DK
	2	DMC	817	Coral Red-VY DK

Symbol	Strands	Type	Number	Color
	1		DMC 823	Navy Blue-DK
	2		DMC 824	Blue-VY DK
	2		DMC 833	Golden Olive-LT
	2		DMC 842	Beige Brown-VY LT
	2		DMC 918	Red Copper-DK
	2		DMC 919	Red Copper
	2		DMC 920	Copper-MD
	2		DMC 930	Antique Blue-DK
	2		DMC 931	Antique Blue-MD
	2		DMC 932	Antique Blue-LT
	2		DMC 934	Black Avocado Green
	2		DMC 936	Avocado Green-VY DK
	2		DMC 938	Coffee Brown-UL DK
	2		DMC 950	Desert Sand-LT
	2		DMC 961	Dusty Rose-DK
	2		DMC 3012	Khaki Green-MD
	2		DMC 3024	Brown Gray-VY LT
	2		DMC 3031	Mocha Brown-VY DK
	2		DMC 3041	Antique Violet-MD
	2		DMC 3042	Antique Violet-LT
	2		DMC 3072	Beaver Gray-VY LT
	2		DMC 3328	Salmon-DK
	2		DMC 3363	Pine Green-MD
	2		DMC 3364	Pine Green
	2		DMC 3371	Black Brown
	2		DMC 3705	Melon-DK
	2		DMC 3713	Salmon-VY LT
	2		DMC 3722	Shell Pink-MD
	2		DMC 3726	Antique Mauve-DK
	2		DMC 3740	Antique Violet-DK
	2		DMC 3747	Blue Violet-VY LT
	2		DMC 3752	Antique Blue-VY LT
	2		DMC 3770	Tawny-VY LT
	2		DMC 3787	Brown Gray-DK
	2		DMC 3799	Pewter Gray-VY DK
	2		DMC 3801	Christmas Red-LT
	2		DMC 3822	Straw-LT
	2		DMC 3826	Golden Brown
	2		DMC 3830	Terra Cotta-MD
	2		DMC 3858	Rosewood-MD
	2		DMC 3860	Cocoa
	2		DMC 3861	Cocoa-LT
	2		DMC 3862	Mocha Beige-DK
	2		DMC 3863	Mocha Beige-MD
	2		DMC 3865	Winter White

Notes:

The middle of this pattern can be found on page 6 and is 69 stitches across and 101 stitches down.

Pattern layout using page numbers in top left.

```

1  2  3  4
5  6  7  8
9 10 11 12
13 14 15 16

```

Usage Summary

Strands Per Skein: 6

Skein Length: 313.0 in

Type	Number	Full	Half	Quarter	Petite	Back(in)	Str(in)	Spec(in)	French	Bead	Skein Est.
DMC 150	150	89	0	0	0	0.0	0.0	0.0	0	0	1.000
DMC 152	152	190	0	0	0	0.0	0.0	0.0	0	0	1.000
DMC 160	160	467	0	0	0	0.0	0.0	0.0	0	0	1.000
DMC 161	161	357	0	0	0	0.0	0.0	0.0	0	0	1.000
DMC 166	166	160	0	0	0	0.0	0.0	0.0	0	0	1.000
DMC 169	169	345	0	0	0	0.0	0.0	0.0	0	0	1.000
DMC 300	300	1307	0	0	0	0.0	0.0	0.0	0	0	1.000
DMC 307	307	66	0	0	0	0.0	0.0	0.0	0	0	1.000
DMC 310	310	3204	0	0	0	0.0	0.0	0.0	0	0	2.000
DMC 317	317	420	0	0	0	0.0	0.0	0.0	0	0	1.000
DMC 318	318	265	0	0	0	0.0	0.0	0.0	0	0	1.000
DMC 336	336	115	0	0	0	0.0	0.0	0.0	0	0	1.000
DMC 370	370	86	0	0	0	0.0	0.0	0.0	0	0	1.000
DMC 372	372	175	0	0	0	0.0	0.0	0.0	0	0	1.000
DMC 400	400	585	0	0	0	0.0	0.0	0.0	0	0	1.000
DMC 402	402	368	0	0	0	0.0	0.0	0.0	0	0	1.000
DMC 413	413	275	0	0	0	0.0	0.0	0.0	0	0	1.000
DMC 434	434	262	0	0	0	0.0	0.0	0.0	0	0	1.000
DMC 435	435	236	0	0	0	0.0	0.0	0.0	0	0	1.000
DMC 436	436	75	0	0	0	0.0	0.0	0.0	0	0	1.000
DMC 471	471	43	0	0	0	0.0	0.0	0.0	0	0	1.000
DMC 520	520	73	0	0	0	0.0	0.0	0.0	0	0	1.000
DMC 524	524	222	0	0	0	0.0	0.0	0.0	0	0	1.000
DMC 580	580	217	0	0	0	0.0	0.0	0.0	0	0	1.000
DMC 606	606	92	0	0	0	0.0	0.0	0.0	0	0	1.000
DMC 612	612	83	0	0	0	0.0	0.0	0.0	0	0	1.000
DMC 640	640	265	0	0	0	0.0	0.0	0.0	0	0	1.000
DMC 647	647	192	0	0	0	0.0	0.0	0.0	0	0	1.000
DMC 648	648	366	0	0	0	0.0	0.0	0.0	0	0	1.000
DMC 720	720	596	0	0	0	0.0	0.0	0.0	0	0	1.000
DMC 722	722	81	0	0	0	0.0	0.0	0.0	0	0	1.000
DMC 730	730	423	0	0	0	0.0	0.0	0.0	0	0	1.000
DMC 734	734	66	0	0	0	0.0	0.0	0.0	0	0	1.000
DMC 741	741	305	0	0	0	0.0	0.0	0.0	0	0	1.000
DMC 758	758	198	0	0	0	0.0	0.0	0.0	0	0	1.000
DMC 775	775	242	0	0	0	0.0	0.0	0.0	0	0	1.000
DMC 779	779	448	0	0	0	0.0	0.0	0.0	0	0	1.000
DMC 780	780	177	0	0	0	0.0	0.0	0.0	0	0	1.000
DMC 782	782	366	0	0	0	0.0	0.0	0.0	0	0	1.000
DMC 794	794	221	0	0	0	0.0	0.0	0.0	0	0	1.000
DMC 799	799	126	0	0	0	0.0	0.0	0.0	0	0	1.000
DMC 800	800	149	0	0	0	0.0	0.0	0.0	0	0	1.000
DMC 801	801	393	0	0	0	0.0	0.0	0.0	0	0	1.000
DMC 814	814	594	0	0	0	0.0	0.0	0.0	0	0	1.000
DMC 817	817	564	0	0	0	0.0	0.0	0.0	0	0	1.000
DMC 823	823	82	0	0	0	0.0	0.0	0.0	0	0	1.000
DMC 824	824	191	0	0	0	0.0	0.0	0.0	0	0	1.000
DMC 833	833	118	0	0	0	0.0	0.0	0.0	0	0	1.000
DMC 842	842	311	0	0	0	0.0	0.0	0.0	0	0	1.000
DMC 918	918	173	0	0	0	0.0	0.0	0.0	0	0	1.000
DMC 919	919	322	0	0	0	0.0	0.0	0.0	0	0	1.000

Type	Number	Full	Half	Quarter	Petite	Back(in)	Str(in)	Spec(in)	French	Bead	Skein	Est.
DMC 920	210	0	0	0	0	0.0	0.0	0.0	0	0	1.000	
DMC 930	128	0	0	0	0	0.0	0.0	0.0	0	0	1.000	
DMC 931	240	0	0	0	0	0.0	0.0	0.0	0	0	1.000	
DMC 932	165	0	0	0	0	0.0	0.0	0.0	0	0	1.000	
DMC 934	191	0	0	0	0	0.0	0.0	0.0	0	0	1.000	
DMC 936	202	0	0	0	0	0.0	0.0	0.0	0	0	1.000	
DMC 938	1274	0	0	0	0	0.0	0.0	0.0	0	0	1.000	
DMC 950	138	0	0	0	0	0.0	0.0	0.0	0	0	1.000	
DMC 961	138	0	0	0	0	0.0	0.0	0.0	0	0	1.000	
DMC 3012	152	0	0	0	0	0.0	0.0	0.0	0	0	1.000	
DMC 3024	75	0	0	0	0	0.0	0.0	0.0	0	0	1.000	
DMC 3031	247	0	0	0	0	0.0	0.0	0.0	0	0	1.000	
DMC 3041	203	0	0	0	0	0.0	0.0	0.0	0	0	1.000	
DMC 3042	171	0	0	0	0	0.0	0.0	0.0	0	0	1.000	
DMC 3072	263	0	0	0	0	0.0	0.0	0.0	0	0	1.000	
DMC 3328	78	0	0	0	0	0.0	0.0	0.0	0	0	1.000	
DMC 3363	153	0	0	0	0	0.0	0.0	0.0	0	0	1.000	
DMC 3364	84	0	0	0	0	0.0	0.0	0.0	0	0	1.000	
DMC 3371	1844	0	0	0	0	0.0	0.0	0.0	0	0	2.000	
DMC 3705	209	0	0	0	0	0.0	0.0	0.0	0	0	1.000	
DMC 3713	182	0	0	0	0	0.0	0.0	0.0	0	0	1.000	
DMC 3722	46	0	0	0	0	0.0	0.0	0.0	0	0	1.000	
DMC 3726	85	0	0	0	0	0.0	0.0	0.0	0	0	1.000	
DMC 3740	82	0	0	0	0	0.0	0.0	0.0	0	0	1.000	
DMC 3747	130	0	0	0	0	0.0	0.0	0.0	0	0	1.000	
DMC 3752	188	0	0	0	0	0.0	0.0	0.0	0	0	1.000	
DMC 3770	236	0	0	0	0	0.0	0.0	0.0	0	0	1.000	
DMC 3787	315	0	0	0	0	0.0	0.0	0.0	0	0	1.000	
DMC 3799	309	0	0	0	0	0.0	0.0	0.0	0	0	1.000	
DMC 3801	78	0	0	0	0	0.0	0.0	0.0	0	0	1.000	
DMC 3822	165	0	0	0	0	0.0	0.0	0.0	0	0	1.000	
DMC 3826	139	0	0	0	0	0.0	0.0	0.0	0	0	1.000	
DMC 3830	279	0	0	0	0	0.0	0.0	0.0	0	0	1.000	
DMC 3858	195	0	0	0	0	0.0	0.0	0.0	0	0	1.000	
DMC 3860	132	0	0	0	0	0.0	0.0	0.0	0	0	1.000	
DMC 3861	250	0	0	0	0	0.0	0.0	0.0	0	0	1.000	
DMC 3862	389	0	0	0	0	0.0	0.0	0.0	0	0	1.000	
DMC 3863	157	0	0	0	0	0.0	0.0	0.0	0	0	1.000	
DMC 3865	732	0	0	0	0	0.0	0.0	0.0	0	0	1.000	